

2C Series Ceramic Bearings



Corrosion
resistance



Chemicals



High
temperature



Vacuum



Non-magnetic



Insulation



Non-grease

Bearing
selection

Products
Series

AISI
440C

AISI
304

AISI
630

Pure
Titanium

Ceramic

Heat
Resistance

Grease
Free

Low
Torque

Solid
Grease

Set
Screw

Alignment
Function

Flange
Unit

Guide
Wheel

6800
6900

SS5200
5200

5800

Customization

Examples
of Use

Ideal for extremely corrosive environment, the 2C series uses ceramics for the inner and outer rings, balls, and fluorine resin for retainer.

Features

1. Completely non-magnetic, by using ceramics.
2. Usable without grease, even in environment where greases can not be used, by using fluorine resin for retainer.
3. The operating temperature is up to 300°C/572°F.

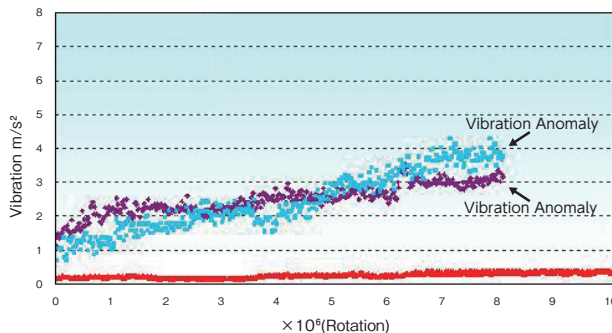
Product Specifications

Standard Specifications	
Inner and Outer Rings	Zirconia ceramics (ZrO ₂)
Balls	Silicon nitride ceramics (Si ₃ N ₄)
Retainer	Fluorine resin

Applications

Seawater-related equipment, metal plating machine, electronic device, equipment used in low temperature, etching equipment, etc.

Performance



Test Conditions

Bearing : 6004
 Temperature : 300°C/572°F
 Radial Load : 400N
 Rotation speed : 1000min⁻¹

- ▲ SMT Ceramic Bearing
- ◆ Other brand, Japanese
- Other brand, abroad

Precautions

- Ceramics are extremely brittle to impact of dropping and others. Please handle with care.
- Fit is class H tolerance range.

Composition of bearing number

2C 6000 CB CN3	<table border="1"> <tr><td style="text-align: center;">1</td><td>2C : Material Zirconia ceramics</td></tr> <tr><td style="text-align: center;">2</td><td>Basic number</td></tr> <tr><td style="text-align: center;">3</td><td>CB : Silicon nitride ceramic balls</td></tr> <tr><td style="text-align: center;">4</td><td>CN3 : Fluorine resin retainer</td></tr> </table>	1	2C : Material Zirconia ceramics	2	Basic number	3	CB : Silicon nitride ceramic balls	4	CN3 : Fluorine resin retainer
1	2C : Material Zirconia ceramics								
2	Basic number								
3	CB : Silicon nitride ceramic balls								
4	CN3 : Fluorine resin retainer								
<table border="1"> <tr><td style="width: 30px; height: 20px; text-align: center;">1</td><td style="width: 30px; height: 20px; text-align: center;">2</td><td style="width: 30px; height: 20px; text-align: center;">3</td><td style="width: 30px; height: 20px; text-align: center;">4</td></tr> </table>	1	2	3	4					
1	2	3	4						

Table of Dimensions

Bearing Numbers	d	D	B	r min.	Limiting Radial Load N	Limiting Speed min ⁻¹
	mm	mm	mm	mm		
2C 6000 CB CN3	10	26	8	0.3	290	3150
2C 6200 CB CN3	10	30	9	0.6	325	2760
2C 6001 CB CN3	12	28	8	0.3	325	2760
2C 6201 CB CN3	12	32	10	0.6	430	2570
2C 6002 CB CN3	15	32	9	0.3	355	2410
2C 6202 CB CN3	15	35	11	0.6	485	2220
2C 6003 CB CN3	17	35	10	0.3	380	2180
2C 6203 CB CN3	17	40	12	0.6	610	1950
2C 6004 CB CN3	20	42	12	0.6	600	1800
2C 6204 CB CN3	20	47	14	1.0	815	1640
2C 6005 CB CN3	25	47	12	0.6	640	1570
2C 6205 CB CN3	25	52	15	1.0	890	1450
2C 6006 CB CN3	30	55	13	1.0	840	1330
2C 6206 CB CN3	30	62	16	1.0	1240	1210

* Limiting radial load and limiting speed are figures when using the bearings without lubricants. Limiting radial load is estimated to have a total rotation speed of 1 million revolutions. The bearings are only available as open type.

Bearing selection

Products Series

AISI 440C

AISI 304

AISI 630

Pure Titanium

Ceramic

Heat Resistance

Grease Free

Low Torque

Solid Grease

Set Screw

Alignment Function

Flange Unit

Guide Wheel

6800
6900

SS5200
5200

5800

Customization

Examples of Use